

PRODUCT CATEGORY

OIL SEPERATOR

PRODUCT NAME

SMX SERIES

APPLICATION

PETROL STATION

CAPACITY

350-50 L/min

PLANT DESCRIPTION

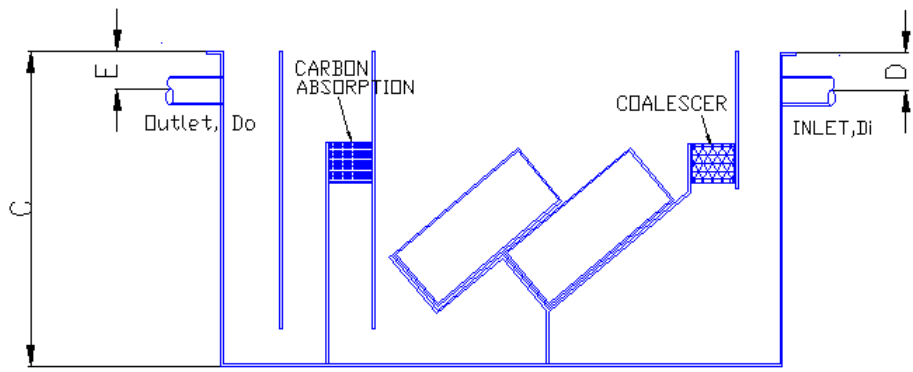
Siemex oil separators base separation systems that utilize stable media to recover liquid hydrocarbons from oily water streams. Oil and water separate as they travel under laminar flow stream through highly efficient coalescer media providing a high separation area for effective coalescence . Without moving parts, low maintenance and small footprint is guaranteed.

Feature

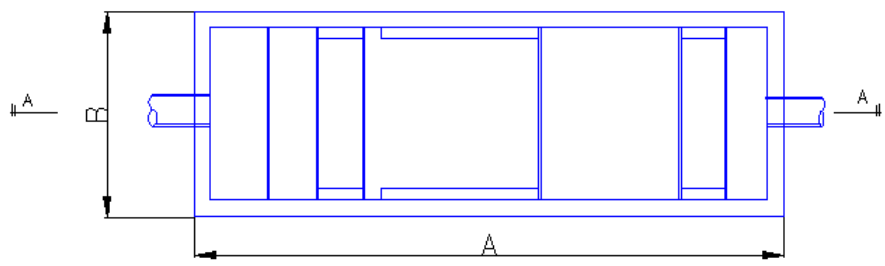
- Robust tank and support frame
- Coalescing plate pack
- Oil collection pipework
- Solids collection hopper and drain valve
- Effluent oil storage drum (or optional tank)
- Control panel full automation
- Optional level control system and oil skimmer for collection pit
- Optional skid mount and access platform
- Flow rates from 1 m³/hr to 20m³/hr (larger non-standard units designed to

APPLICATION

- Refueling aprons
- Petroleum storage installations
- Petrol service stations
- Car and vehicle workshops
- Car wash / engine wash
- Heavy vehicle & light vehicle wash bays for heavy industries
- Mechanical/Engineering workshops
- Industrial equipment wash-down
- Contaminated storm-water treatment



SECTION A-A



PLAN

SMX SERIES DIMENSION

MODEL	A	B	C	D	E	Di	Do
SMX 300	2400	1800	1500	150	200	200	200
SMX 250	2400	1500	1500	150	200	150	150
SMX 200	2400	1500	1500	150	200	150	150
SMX 150	2400	1200	1200	100	150	100	100
SMX 100	2400	1200	1200	100	150	100	100
SMX 50	1800	600	1000	100	150	100	100

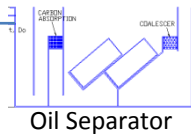
- For special size please contact out technical expert

TYPICAL LAYOUT



- Drain from refuelling bay

To Drain ←



Oil Separator

Pump Sump

SIEMEX SDN BHD

No.23, Jalan PJU 3/45, Sunway Damansara, 47810 Petaling Jaya, Selangor, MALAYSIA
Tel: 03-7880 0277 Fax: +603-7880 9266
Website: <http://www.siemex.com.my>